

How to separate **YOUR WASTE**

**AGGIUS
AGLIENTU
BADESI
BORTIGIADAS
CALANGIANUS
LUOGOSANTO
LURAS
SANTA TERESA GALLURA
TEMPIO PAUSANIA**

2016



**HELP US TO RECYCLE MORE
BY SORTING YOUR WASTE
PROPERLY**

HOW TO USE THIS GUIDE

This guide tells you how to put the right rubbish in the right bin and how to distinguish the different materials.



Sorting waste is a team game!

Sorting waste

- is a legal obligation
- allows us to keep down the costs of the waste collection service
- helps the environment with a small effort

BULKY WASTE COLLECTION SERVICE

If you need to get rid of large waste items such as metal bed bases, mattresses, sofas, furniture, etc. ... Call us and we will collect them from your home on Thursday free of charge.

BULKY WASTE ITEMS

Metal bed bases, mattresses, glass and aluminium doors and windows, miscellaneous metallic materials, shelves, wood, plastics and other materials, chairs, sofas, armchairs, miscellaneous furniture, light fittings, empty paint cans, etc. All large WEEE (waste electrical and electronic equipment) such as washing machines, refrigerators, air conditioners, freezers, etc.

How to sort your waste



GLASS

Glass bottles (remove steel and aluminium caps), drinking glasses, glass containers and cans, glass demijohns, glass bowls, glass trays, flasks.

NO:

incandescent light bulbs, energy-saving light bulbs and neon lamps, mirrors, pyrex glassware, crockery, porcelain and crystal

WHERE and HOW:

Put the waste, clean and free of residues, loose, not in bags, in the **40-litre grey bins with orange lid** in urban areas or in the **yellow bins** in apartment blocks and for commercial activities.



240-litre yellow bin for rural areas, apartment blocks and commercial activities



40-litre grey bin with orange lid for urban areas

WEEE

Waste Electrical and Electronic Equipment

WEEE means waste electrical and electronic equipment. WEEE includes refrigerators, freezers, dishwashers, washing machines, boilers, air conditioners, domestic appliances, televisions, mobile phones, computers, energy-saving light bulbs, shavers, printers, monitors, phones, neon lights, etc.

EXPIRED AND UNUSED MEDICINES

Put them in the dedicated containers found in pharmacies.

SPENT BATTERIES

Put them in the dedicated containers in shops that sell batteries.



PAPER AND CARDBOARD

Tetra pak containers (for milk, fruit juice, etc.), magazines, newspapers, daily newspapers, books, notebooks, sheets of paper in general; boxes, cardboard containers and packaging for foodstuffs (pasta, rice, tuna, etc.), miscellaneous cardboard packaging (shoe boxes, packaging for detergents, toys, etc.), cardboard egg boxes, carry-out pizza boxes and paper tablecloths.

NO

soiled paper, baking paper, laminated and coupled paper and thermal paper (receipts)

WHERE and HOW:

collect paper and cardboard, preferably tied in packages, in bulk or in paper bags and put them in the **green bins** in urban areas or in the **white bins** in apartment blocks and for commercial activities



240-litre white bin for rural areas, apartment blocks and commercial activities



40-litre green bin for urban areas



TINS AND CANS

Food tins and cans (tuna, meat, vegetables, pet food, etc.), aluminium TINS AND

CANS, steel or aluminium caps or lids, spray cans (hairspray, perfume, foam, cream, etc.), food aluminium trays (not too dirty), aluminium tubes (mayonnaise, creams, etc.), nails, screws, iron wires and other small metal parts for household use, steel-only or aluminium-only moka pots and small saucepans, aluminium foil.

WHERE and HOW:

Put the waste, clean and free of residues, loose, not in bags, in the **40-litre grey bins with orange lid** in urban areas or in the **green bins** in apartment blocks and for commercial activities.

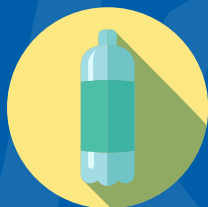


240-litre green bin for rural areas, apartment blocks and commercial activities



40-litre grey bin with orange lid for urban areas

How to sort your waste



PLASTIC

Plastic bottles for water, beverages, oil, juice and milk etc., containers/dispensers of detergents, soaps, various household cleaners, transparent boxes, rigid containers/flexible packaging for food in general (sweets, fresh pasta, cold cuts, etc.), plastic containers for foodstuffs (eggs, ice creams, etc.), containers/tubs for yoghurt, creams and desserts, net bags for fruit and vegetables, plastic cups for cold tea drinks, cans for the packaging of various products (cosmetics, wet wipes, snacks), plant pots (maximum diameter 15-20 cm), plastic bags for food in general (pasta, rice, chips, candies, ice cream, etc.), plastic shopping bags, bags for gardening products, pet food or detergents, small plastic packaging (wrapping of bottles, toilet paper, snacks, etc.), polystyrene, plastic cups and plates

NO

Plastic cutlery and toys

WHERE and HOW:

Compress the waste and place it, in bulk or in semi-transparent plastic bags, in **40-litre green bins** in urban areas or in the **large blue bins** in apartment blocks and for commercial activities.



240-litre blue bin for rural areas, apartment blocks and commercial activities.



40-litre green bin for urban areas



NON-RECYCLABLE WASTE

Put here all items that cannot be sorted and recycled and those items made of different materials that cannot be separated (but do separate them where possible).

Plastic cutlery, clothes hangers, rubber and plastic toys, CDs, DVDs, audio and videotapes, crockery, porcelain, pyrex glassware and glass ceramic, vacuum cleaner waste and household waste, packaging of demijohns (both in plastic and hay), X-ray photographs, photographic films and slides, pens, felt-tip pens and stationery products in general, toothbrushes and brushes, sponges and old rags, greaseproof or laminated paper, tights, disposable nappies and sanitary towels/pads, pet waste, clothes, shoes, cigarette butts and chewing gums.

WHERE and HOW:

Do not use black plastic bags. Use a semi-transparent bag and place it in the **40-litre grey bin** in urban areas or in the **grey bin** in apartment blocks and for commercial activities.



240-litre grey bin for rural areas, apartment blocks and commercial activities



40-litre grey bin for residential areas

How to sort your waste



FOOD WASTE

Cold and drained plate scrapings, raw or cooked; molluscs such as mussels and clams and their shells, etc., remains of fruit and vegetables, meat, fish and bones, rice, pasta, bread, biscuits, cheese, damaged food, fruit, seeds, coffee grounds and tea, camomile and other infusions bags, eggshells, molluscs and dried fruit, paper napkins and paper tissues, sawdust, kitchen paper towels, excrements of domestic animals, leaves and flowers from indoor plants (small quantities), dried flowers and cold wood ash.

WHERE and HOW:

Use the compostable bags, close them tightly and put them in the 25-litre brown bin in urban areas, in the brown bin in apartment blocks or in the 300-litre composters in rural areas.



**300-litre
composter for
rural areas**



**240-litre
brown bin for
apartment
blocks**



**25-litre bin for
urban areas**

Did you know?

Fact: recycling glass is good for the economy and the environment.

New bottles can be made from recycled glass with significant energy savings: up to 25% of energy saved, amounting to thousands of tonnes of oil. Recycling glass also helps the environment by reducing quarrying activity to obtain the silica needed to make glass.

Fact: 90% of the paper, bags and boxes used in supermarkets is made from recycled materials.

The remaining 10% of the raw wood used to make paper bags and cardboard boxes comes from sustainably managed forests and fast-growing tree plantations managed to produce paper.

Fact: all the moka pots produced in Italy (about 7 million) are made of recycled aluminium

Thanks to the increasing amounts of recycled aluminium, over the last five years it was possible to save a volume of CO2 emissions equivalent to the greenhouse gas emissions of a small thermoelectric power plant.

Did you know that plastic has a very long life?

If it is disposed of in landfills or abandoned in nature, it remains there for hundreds of years because it is almost indestructible. If, on the contrary, we recycle it, it can be turned into many objects which can still be useful: toys, benches, furnishings, car interiors, carpet, new containers, etc.

What happens to non-recyclable waste?

Non-recyclable waste means all the waste that cannot be sent for recycling; it should not be mixed with recyclable waste because this would contaminate the recycling process.

Non-recyclable waste is sent to landfills or burned in waste-to-energy plants to produce electricity.

Did you know that recycling old clothes is good?

Still wearable clothes can be donated to charities for reuse; the rest can be reprocessed by the textile industry for various uses or can be shredded to obtain textile fibres and so reduce the demand for virgin fibres. Thus recycling also helps the environment by reducing the environmental impact of industry.

Did you know that tyres can also be recycled?

It is very important to dispose of tyres properly because, if mixed with normal waste, they can be toxic and polluting. Tyres are made of non-biodegradable material and can pollute the air and soil if burned. On the other hand, tyres can be recycled to obtain energy, tiles, shoe soles, road paving materials, motor vehicle components and much more.

Did you know that batteries are a hazardous waste?

All hazardous waste must be separated from other types of waste. Hazardous waste must be placed in the appropriate containers. Hazardous waste - even more than other waste - must never be discarded in the environment: hazardous waste contains acids, lead and other metals harmful to the environment and to human health.

CONTACT US, WE ARE ALWAYS HAPPY TO HELP.

Contact us (free of charge) for information and reports, and to book the **bulky waste, garden waste and nappy collection service for households** (free of charge).

FREE-PHONE (LANDLINE ONLY)

800.530.980

**For calls from mobile phones
and to request collection
of BULKY WASTE ITEMS**

075.59.17.125

**Open from Monday to Saturday
from 8:30 a.m. to 1:00 p.m.
and from 3:00 p.m. to 5:00 p.m.
E-mail: info@ambienteitaliasrl.it**

Put the waste outside your door the night before the pick-up day, from 8:00 p.m. to 5:00 a.m. of the following morning.

**Bin kerbside collection times:
from 8:00 a.m. to 9:00 a.m. for
households and businesses outside
the urban area**



MUNICIPALITY OF
AGGIU



MUNICIPALITY OF
AGLIENTU



MUNICIPALITY OF
BADESI



MUNICIPALITY OF
BORTIGIADAS



MUNICIPALITY OF
CALANGIANUS



MUNICIPALITY OF
LUOGOSANTO



MUNICIPALITY OF
LURAS



MUNICIPALITY OF
SANTA TERESA GALLURA



MUNICIPALITY OF
TEMPIO PAUSANIA



**HELP US TO RECYCLE MORE
BY SORTING YOUR WASTE
PROPERLY**